

# Bowral & District Hospital Redevelopment Stage 2

## **Landscape Design Development**

7th October 2022





Landscape Areas



**DETERMINED – APPROVAL**

REF Approval No: 08/2023

Date: 24/2/2023

Signed by: *Lozong*

- A

**Future Mortuary Courtyard**  
Planters and seating to the edge of the deck
- B

**Administration Building**  
Improvements to paving and new accessible entry & paving. Additional landscape improvements. - **Covered by REF1**
- C

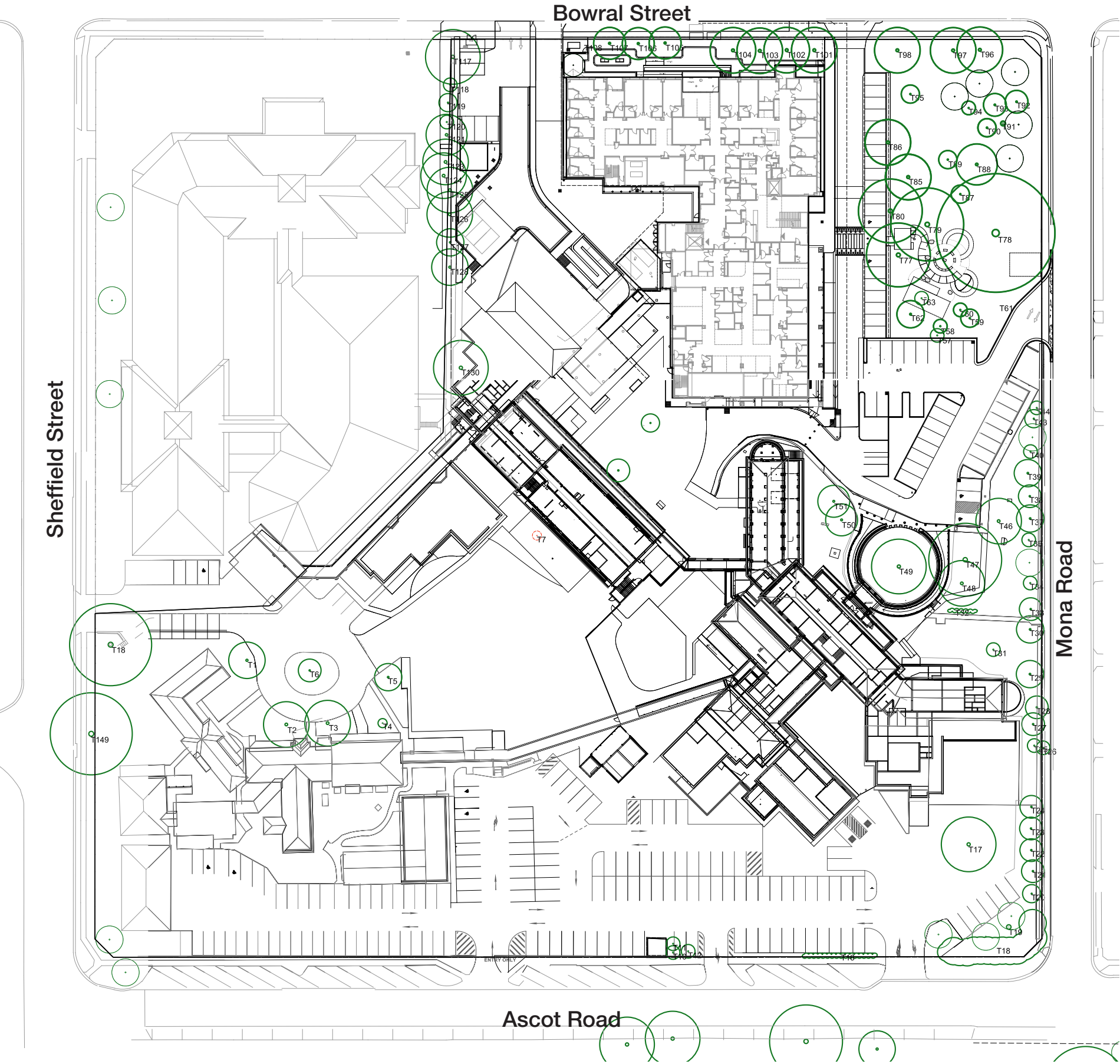
**Aboriginal Healing Space**  
To be established with community - **Covered by REF1**
- D

**Staff Courtyard and South West Services**  
Staff courtyard with landscaping to screen new and existing storage & utilities
- E

**Car parking to be reconfigured**



Existing Trees



Health  
Infrastructure

**DETERMINED – APPROVAL**

REF Approval No: 08/2023

Date: 24/2/2023

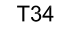
Signed by:

*20309.*

**Legend**

 Existing tree to be removed

 Existing tree to be retained

 Tree assessed in Natrually Trees Arbocultural Impact Appraisal April 2018



Staff Dining



3m deep buffer for screening to utilities and services

Recreational opportunities for staff members

Paved dining area

Concrete hob & wall to ground at the edge of the deck

Raised timber deck for additional seating & dining opportunities

Bench seating

Open turf area



Health  
Infrastructure

**DETERMINED – APPROVAL**

REF Approval No: 08/2023

Date: 24/2/2023

Signed by: *Lozong*



Recreational opportunities



Turf garden area



Dining opportunities



Screening planting to services



Staff Courtyard



Raised mortuary courtyard with seating and planting for privacy

Gravel area subject to design development

Open turf area with relocated seating

Milton Park veranda



Health Infrastructure

**DETERMINED – APPROVAL**

REF Approval No: 08/2023

Date: 24/2/2023

Signed by:

*2030g.*



Gravel planter area



Turf garden area



Lawn seating opportunities



Deck area with planting





Health  
Infrastructure

**DETERMINED – APPROVAL**

REF Approval No: 08/2023

Date: 24/2/2023

Signed by: *[Signature]*



Acer palmatum



Brachychiton populneus  
Kurrajong



Xanthorrhoea Sp  
Grass Tree



Backhousia myrtifolia  
Cinnamon Myrtle

Indicative Plant Schedule Staff

Botanic Name	Common Name	Mature Size (h x w)
Staff and Mortuary Courtyard		
Trees		
Acer palmatum	Japanese Maple	4 x 4
Tristaniopsis laurina	Water Gum	7 x 6
Pyrus ussuriensis	Manchurian Pear	9 x 7
Shrubs		
Acmena smithii minor	Lily Pilly	2 x 2
Acanthus mollis	Oyster Plant	1 x 1
Anigozanthos Big Red	Kangaroo Paw	1 x 1
Callistemon ‘Endeavour’		2 x 3
Callistemon ‘Little John’		.5 x .5
Lavendula dentata	Lavender	1 x 1
Melaleuca linariifolia ‘Claret Tops’	Honey Myrtle	1 x 1
Raphiolepis ‘Oriental Pearl’		1 x 1
Photinia Red Robin	Red Robin	2 x 2
Syzygium ‘Tiny Trev’		1 x 1
Teucrium fruticans	Germander	.75 x 1
Westringa ‘Wingecarribee Gem’	Costal Rosmary	1.5 x 1.5
Viburnum tinus	Japanese snowball	3 x 2
Grasses and Groundcovers		
Ajuga reptans	Bugle Weed	.3 x 1
Banksia ‘Birthday Candles’		.3 x 1
Convolvulus mauritanicus	Morning Glory	.15 x 1
Grevillea ‘Bronze Rambler’		.2 x 1
Juniperus horizontalis ‘Douglasii’	Prostrate Juniper	0.2 x 0.5
Leptospermum hybrid ‘Pink Cascade’		.3 x 1
Lomandra ‘Tanika’		.4 x .4
Tulbaghia violacea	Society Garlic	.4 x .4
Hardenbergia violacea	False Sasparilla	.5 x 2
Liriope Evergreen Giant		.4 x .4
Lomandra sp.	Mat Rush	1 x 1
Myoporum parvifolium	Creeping Boobialla	.15 x 1
Sensory		
Aloysia citrodora	Lemon Verbena	.3 x .3
Rosemarinus officinalis	Rosemary	0.5 x 0.5
Stachys byzantina	Lambs Ear	.4 x .4
Thymus vulgaris	Common Thyme	0.3 x 0.3



Westringa ‘Wingecarribee Gem’



English lavender



Juniperus horizontalis ‘Douglasii’



Anigozanthos Big Red  
Kangaroo Paw



Tasmania insipida  
Pepper Bush



Mentha australis  
Native Mint